

AUGUSTA, ME 207-622-5025  
GARDINER, ME 207-582-7500

WWW.LAPOINTELUMBER.COM

PROJECT:

### REVISIONS

NUMBER	DATE
1	11/15/2018
2	4/22/2019

SCALE: 1/4"=1'

NOTES:

DRAWN BY:

JOANNE TARR

JTARR@LAPOINTELUMBER.COM  
DIRECT LINE: 620-7724

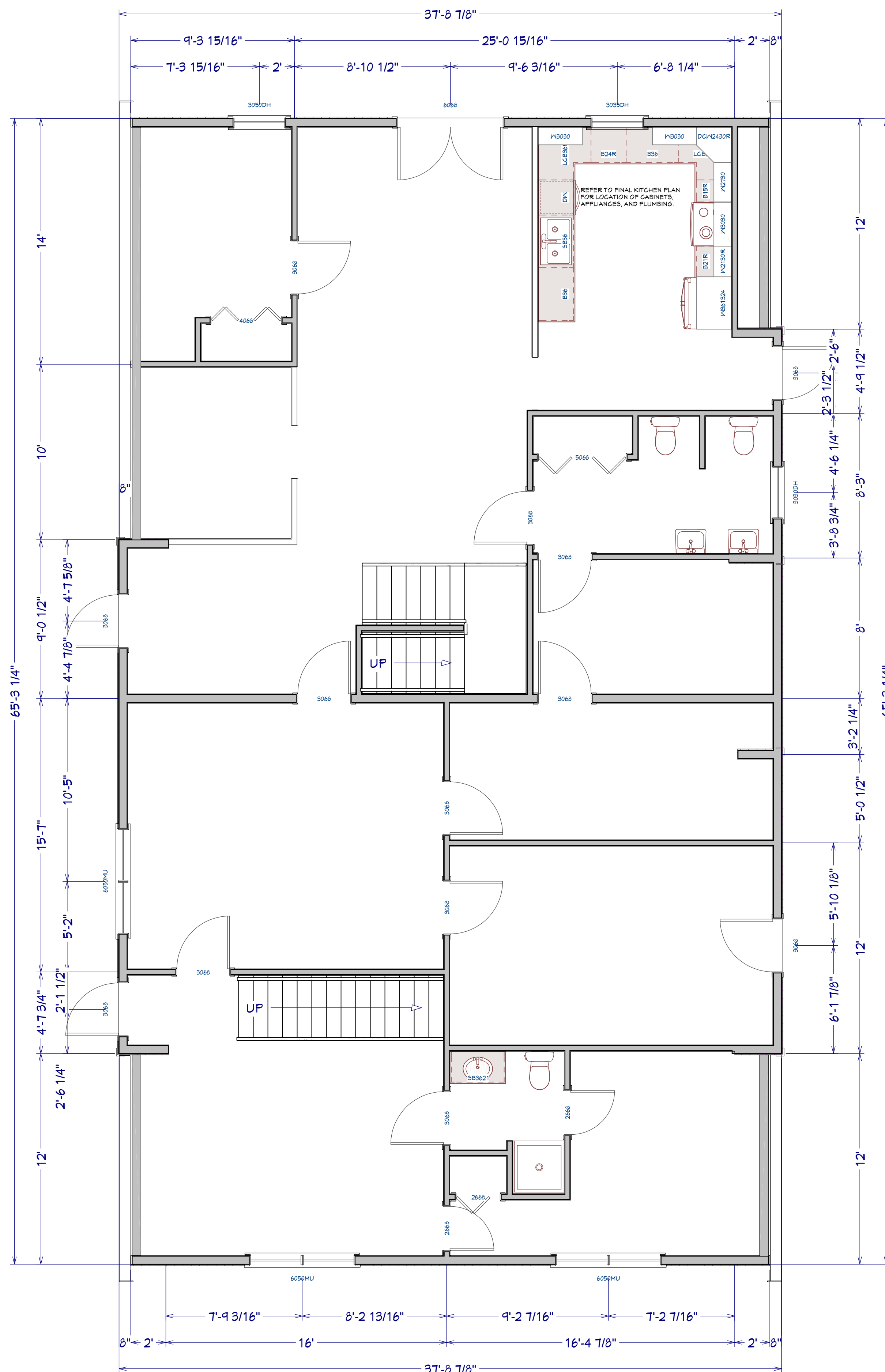
**DISCLAIMER: LAPOINTE LUMBER INC.**  
HAS PROVIDED THESE DRAWINGS AS A SERVICE TO OUR CUSTOMERS. THESE DRAWINGS HAVE **NOT** BEEN PREPARED OR REVIEWED BY REGISTERED ARCHITECT OR ENGINEER AND ARE FOR ILLUSTRATIVE OR INFORMATIONAL PURPOSES ONLY **NOT** AS A BASIS OF CONSTRUCTION. WE HIGHLY RECOMMEND THE RETENTION OF A REGISTERED ARCHITECT OR ENGINEER FOR DETAILED CONSTRUCTION DRAWINGS. LAPOINTE LUMBER WILL ASSUME **NO** LIABILITY IF THESE DRAWINGS ARE USED AS A BASIS FOR CONSTRUCTION.

PAGE:

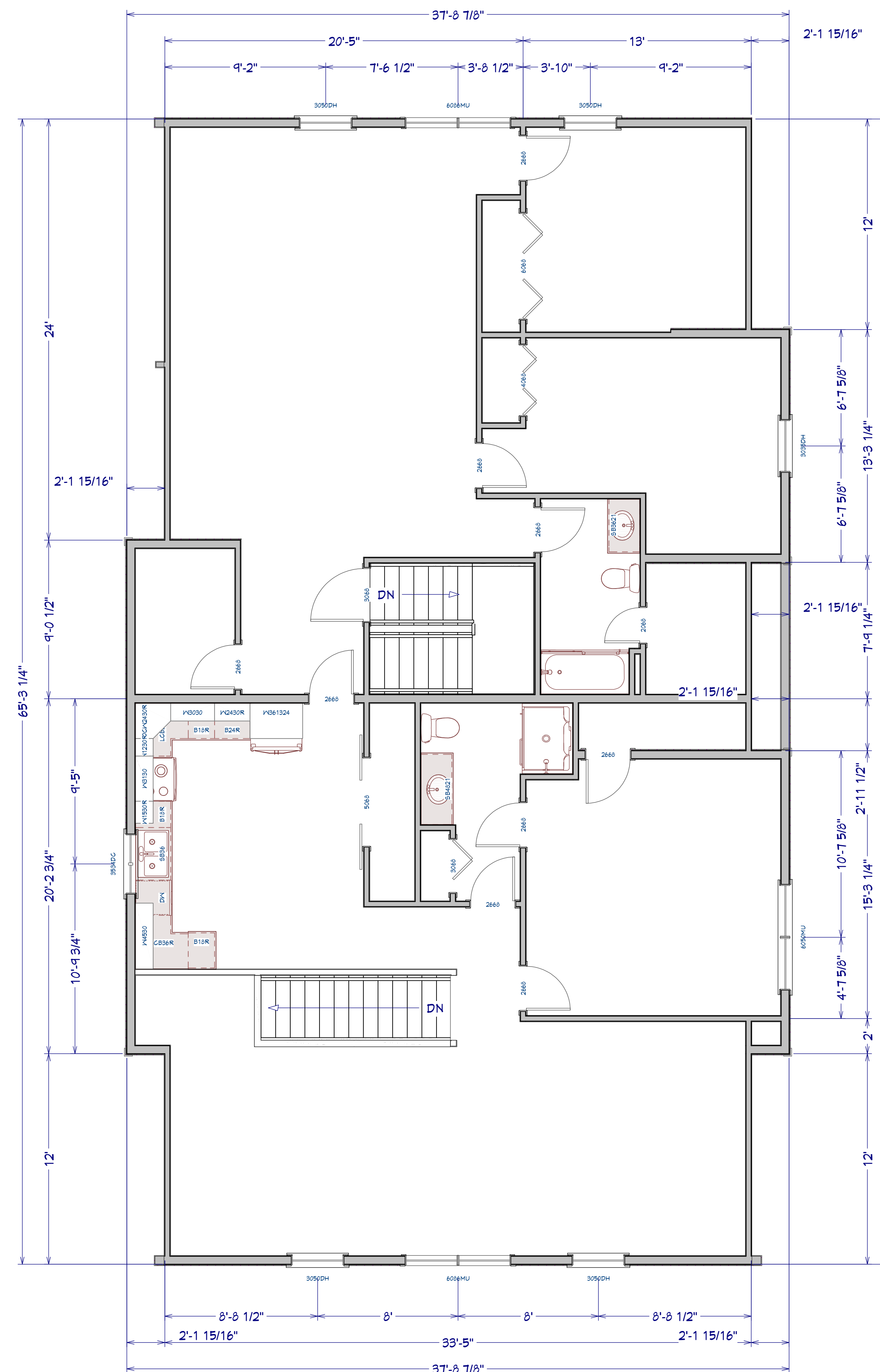
1

PRINT DATE:

4/22/2019



FIRST FLOOR PLAN



SECOND FLOOR PLAN

PROJECT:

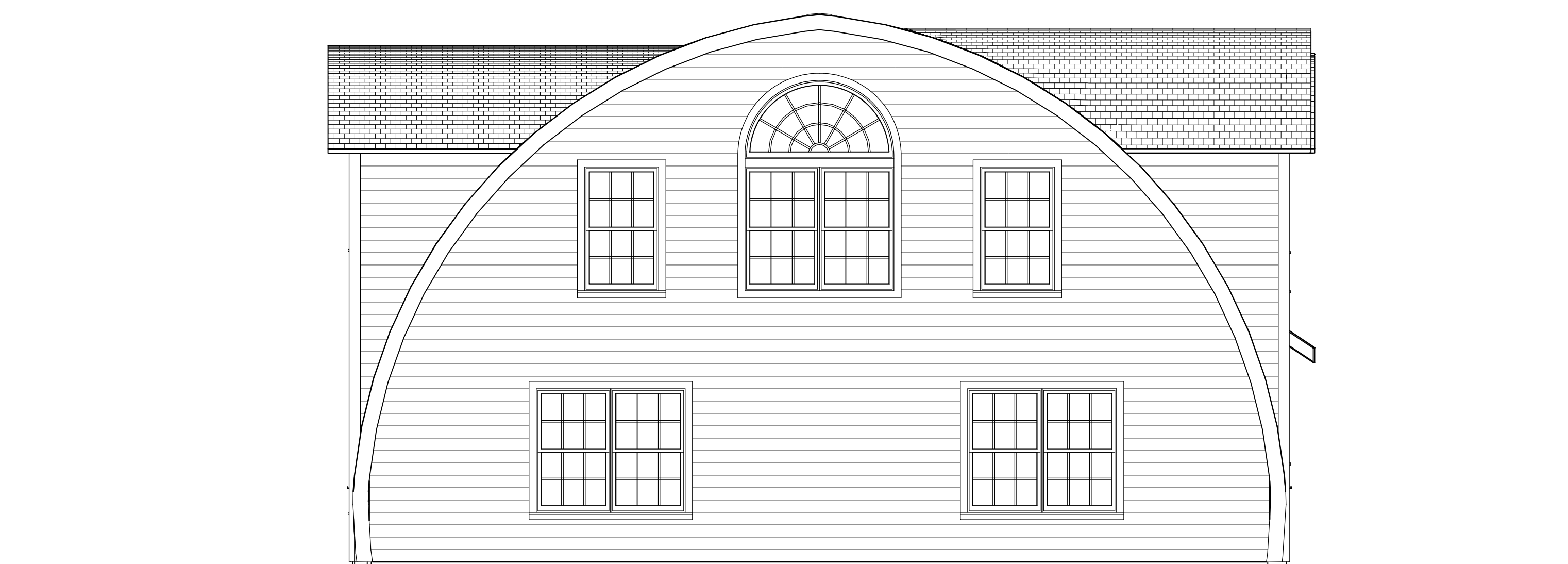
REVISIONS	
NUMBER	DATE
1	11/15/2018
2	4/22/2019

SCALE: 1/4"=1'

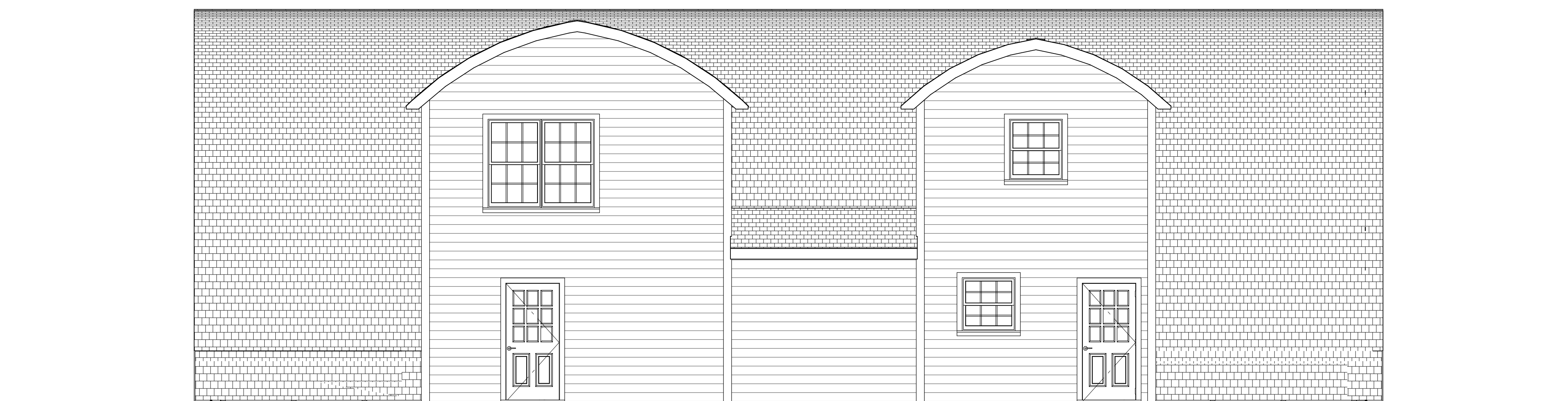
NOTES:

DRAWN BY: JOANNE TARR  
JTARR@LAPOINTELUMBER.COM  
DIRECT LINE: 620-7729

**DISCLAIMER:** LAPOINTE LUMBER INC. HAS PROVIDED THESE DRAWINGS AS A SERVICE TO OUR CUSTOMERS. THESE DRAWINGS HAVE *NOT* BEEN PREPARED OR REVIEWED BY REGISTERED ARCHITECT OR ENGINEER AND ARE FOR ILLUSTRATIVE OR INFORMATIONAL PURPOSES ONLY *NOT* AS A BASIS OF CONSTRUCTION. WE HIGHLY RECOMMEND THE RETENTION OF A REGISTERED ARCHITECT OR ENGINEER FOR DETAILED CONSTRUCTION DRAWINGS. LAPOINTE LUMBER WILL ASSUME *NO* LIABILITY IF THESE DRAWINGS ARE USED AS A BASIS FOR CONSTRUCTION.



FRONT ELEVATION



RIGHT ELEVATION

PROJECT:

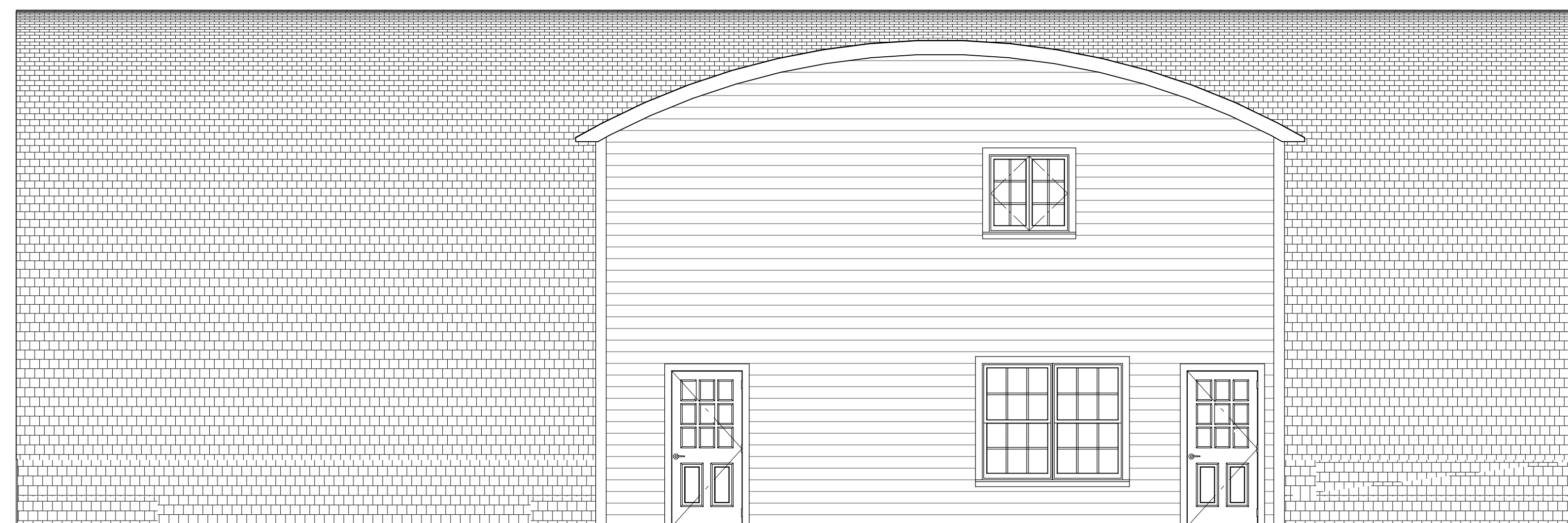


BACK ELEVATION

REVISIONS	
NUMBER	DATE
1	11/15/2018
2	4/22/2019

SCALE:                      1/4"=1'

NOTES:



LEFT ELEVATION

DRAWN BY:  
**JOANNE TARR**  
JTARR@LAPOINTELUMBER.COM  
DIRECT LINE: 620-T129

**DISCLAIMER: LAPOINTE LUMBER INC.**  
HAS PROVIDED THESE DRAWINGS AS A SERVICE TO OUR CUSTOMERS. THESE DRAWINGS HAVE *NOT* BEEN PREPARED OR REVIEWED BY REGISTERED ARCHITECT OR ENGINEER AND ARE FOR ILLUSTRATIVE OR INFORMATIONAL PURPOSES ONLY *NOT* AS A BASIS OF CONSTRUCTION. WE HIGHLY RECOMMEND THE RETENTION OF A REGISTERED ARCHITECT OR ENGINEER FOR DETAILED CONSTRUCTION DRAWINGS. LAPOINTE LUMBER WILL ASSUME *NO* LIABILITY IF THESE DRAWINGS ARE USED AS A BASIS FOR CONSTRUCTION.