

**MOVING INTO A LOWER COST,
SAFER & GREENER FUTURE**

**28'x38' Bungalow +/- 1062 Square Feet
1 Bedroom & Bathroom – Heated Garage**

Low Ownership Cost

**Ruggedly Built To
Handle High Wind &
Heavy Snow Loads**

In Floor Radiant Heat

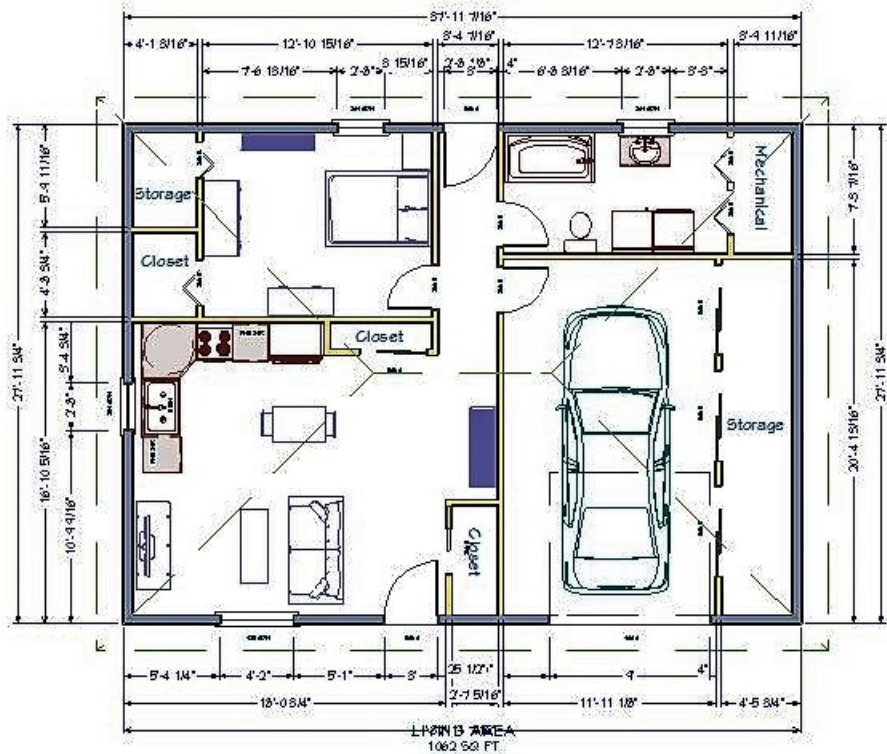


**Exceptionally Low
Energy &
Maintenance Costs**

**Green & Fast
Construction**

**Unlimited Interior
Layout & Exterior
Design Opportunities**

**Projected Higher
Resale Value & ROI**



www.archtypestructures.com

Budgetary Turn Key Price (Less Land) \$183,000.00



Thom Labrie 207-754-4244 thom@fairpoint.net
 Bob Bower 207-458-2641 bbower@sprayfoamofmaine.com

**Designed & Engineered To Deliver
Exceptionally High Financial, Physical &
Environmental Performance**

