

**MOVING INTO A LOWER COST,  
SAFER & GREENER FUTURE**

**32'x38' Bungalow +/-1,216 Square Feet  
2 Bedrooms, 2 Bathrooms & Laundry Room**

**Lower Construction &  
Ownership Cost**

**Ruggedly Built To  
Handle High Wind &  
Heavy Snow Loads**

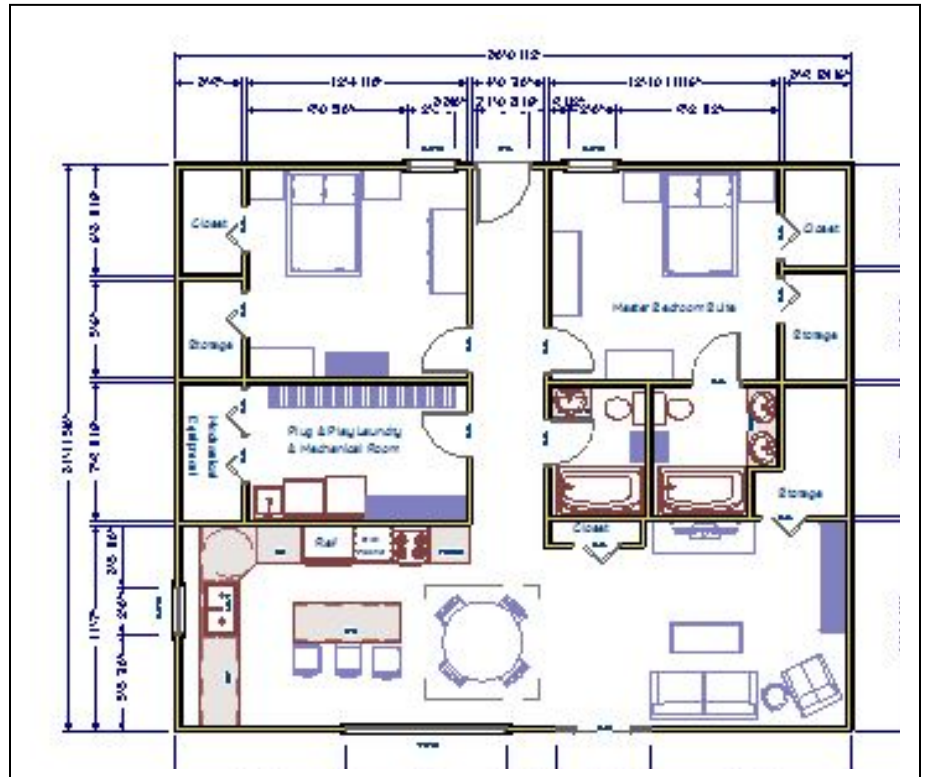
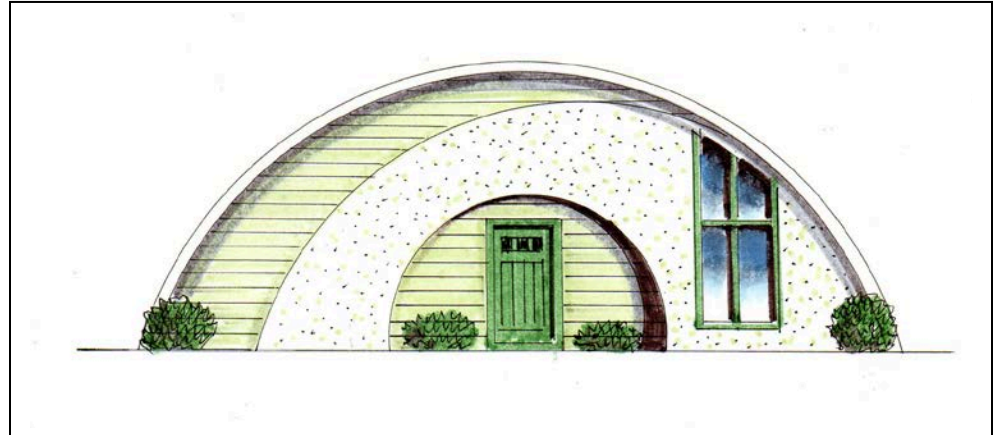
**In Floor Radiant Heat**

**Exceptionally Low  
Energy &  
Maintenance Costs**

**Green & Fast  
Construction**

**Unlimited Interior  
Layout & Exterior  
Design Opportunities**

**Projected Higher  
Resale Value & ROI**



**Budgetary Turn Key Price (Less Land) \$198,500.00**

[www.archtypestructures.com](http://www.archtypestructures.com)

**Designed & Engineered To Deliver  
Exceptionally High Financial, Physical &  
Environmental Performance**



Thom Labrie 207-754-4244  
Bob Bower 207-458-2641

[thom@fairpoint.net](mailto:thom@fairpoint.net)  
[bbower@sprayfoamofmaine.com](mailto:bbower@sprayfoamofmaine.com)

