

**MOVING INTO A LOWER COST,
SAFER & GREENER FUTURE**

**44'x38' Bungalow +/-1,670 Square Feet
2 Bedrooms, 2 Bathrooms & Heated Garage**

**Lower Construction &
Ownership Cost**

**Ruggedly Built To
Handle High Wind &
Heavy Snow Loads**

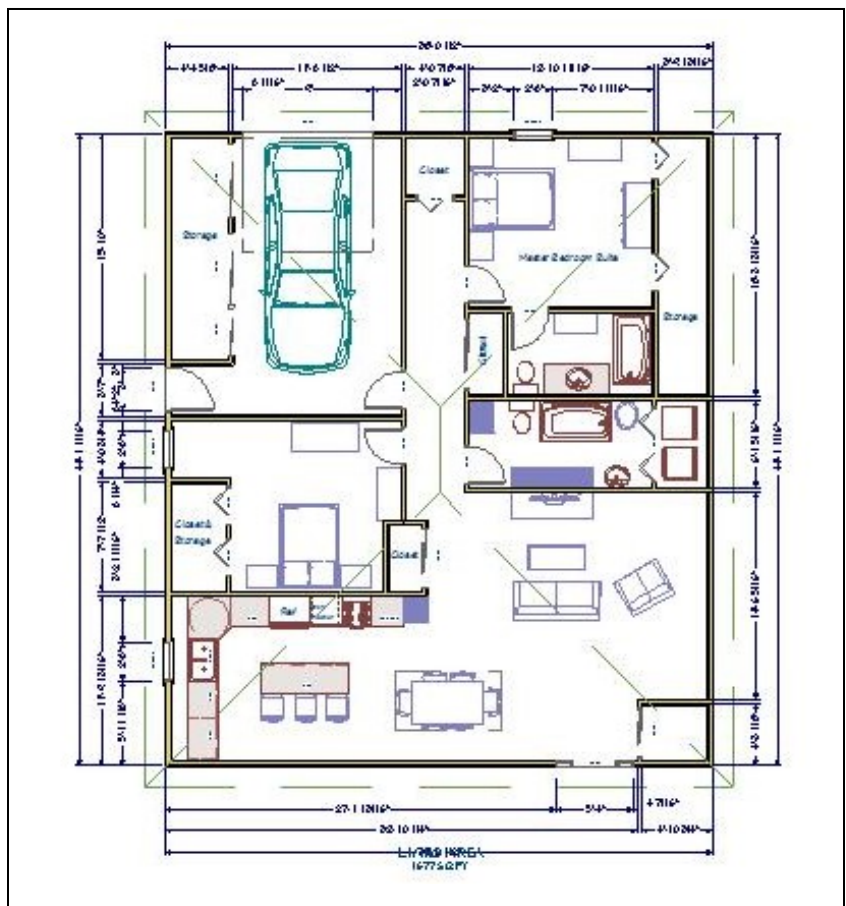
In Floor Radiant Heat

**Exceptionally Low
Energy &
Maintenance Costs**

**Green & Fast
Construction**

**Unlimited Interior
Layout & Exterior
Design Opportunities**

**Projected Higher
Resale Value & ROI**



www.archtypestructures.com

Budgetary Turn Key Price (Less Land) \$268,000.00



Thom Labrie 207-754-4244
Bob Bower 207-458-2641

thom@fairpoint.net
bbower@sprayfoamofmaine.com

**Designed & Engineered To Deliver
Exceptionally High Financial, Physical &
Environmental Performance**

