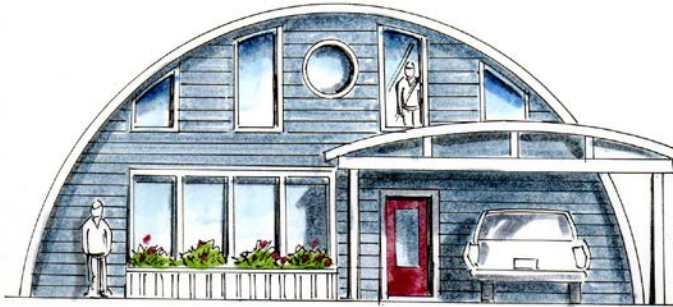


**MOVING INTO A LOWER COST,
SAFER & GREENER FUTURE**

**40'x40' With 24'x33' Loft Area - +/- 2,150 sq. ft.
3 Bedrooms & Bathrooms**



**Lower Construction &
Ownership Cost**

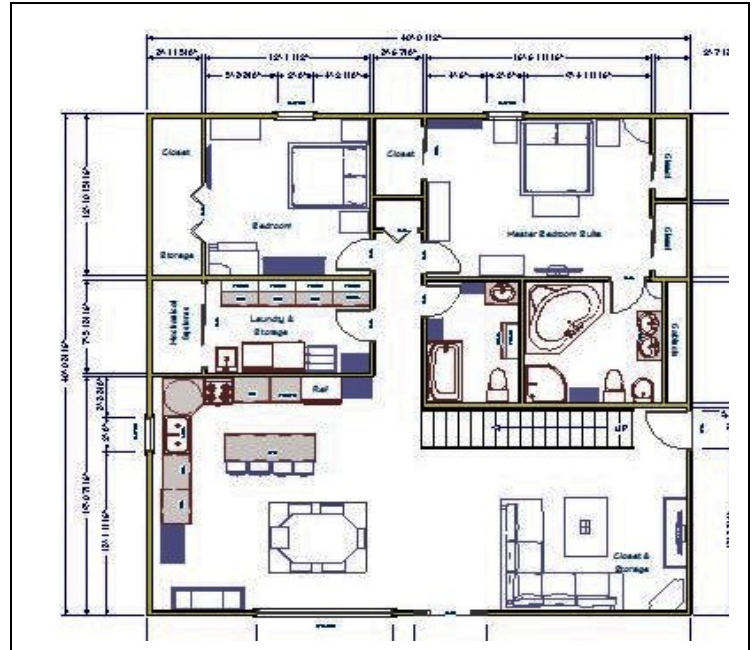
**Ruggedly Built To
Handle High Wind &
Heavy Snow Loads**

**Exceptionally Low
Energy &
Maintenance Costs**

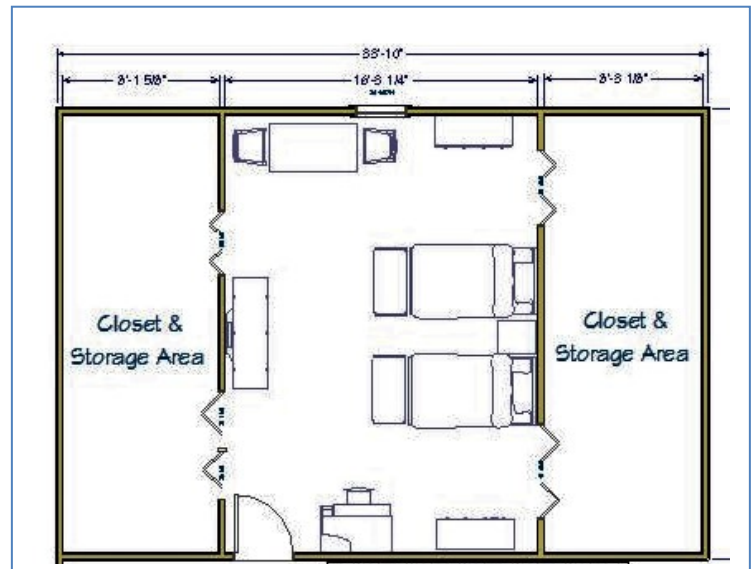
**Green & Fast
Construction**

**Unlimited Interior
Layout & Exterior
Design Opportunities**

**Projected Higher
Resale Value & ROI**



First Floor



Loft Area

Budgetary Turn Key Price (Less Land) \$238,000.00

In Floor Radiant Heat

**Designed & Engineered To Deliver
Exceptionally High Financial, Physical &
Environmental Performance**



www.archypestructures.com

Thom Labrie 207-754-4244
Bob Bower 207-458-2641

thom@fairpoint.net
bbower@sprayfoamofmaine.com

