

**MOVING INTO A LOWER COST,
SAFER & GREENER FUTURE**

**Gothic 28'x32' +/-1,486 Square Feet
2 Bedrooms, 1 Bathroom, 16' Loft and
Vaulted Ceiling Kitchen & Living Areas**

**Lower Construction
& Ownership Cost**

**Ruggedly Built To
Handle High Wind &
Heavy Snow Loads**

In Floor Radiant Heat

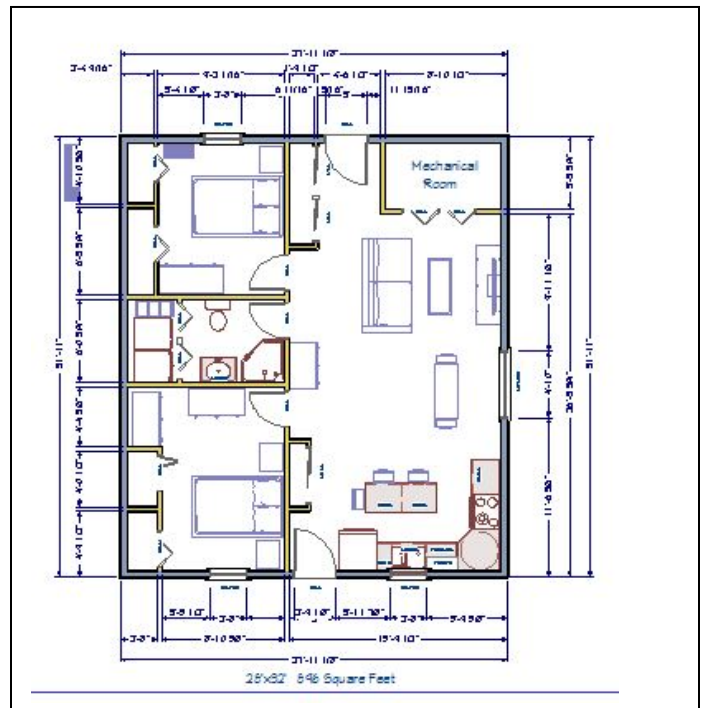
**Exceptionally Low
Energy &
Maintenance Costs**

**Green & Fast
Construction**

**Unlimited Interior
Layout & Exterior
Design Opportunities**

**Projected Higher
Resale Value & ROI**

**Designed & Engineered To Deliver
Exceptionally High Financial, Physical &
Environmental Performance**



Budgetary Turn Key Price (Less Land) \$193,000.00



www.archypestructures.com

Thom Labrie 207-754-4244
Bob Bower 207-458-2641

thom@fairpoint.net
bbower@sprayfoamofmaine.com

